

E8500-MK Marine Kit



Portable Emissions Analyzer For Marine Applications

Measure Exhaust Gases From Marine Diesel Engines
For Compliance with MARPOL Annex VI & NOx Technical Code

- 8 Gas Sensors Included
- Built-In Thermoelectric Chiller
- Automatic Condensate Drain Pump
- True NOx (NO + NO₂)
- NDIR Bench for:
CO₂, CxHy, & High CO
- REAL-TIME Software
with Bluetooth & USB
- Spare Parts Included
- Internal Memory with
Automatic Data Saving
- Rechargeable Battery



O₂

CO₂

CO

NO

NO₂

NO_x

SO₂

CxHy

Flue Gas &
Air Temp.

Draft & Diff.
Pressure

 **MADE IN USA**



“Built with Quality in Mind”

E Instruments International

www.E-Inst.com

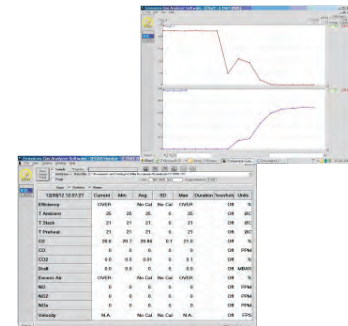
P: 215-750-1212 F: 215-750-1399 A: 402 Middletown Blvd, Ste 216 Langhorne, PA 19047

E8500-MK Specifications

Parameter	Sensor	Range	Res.	Accuracy
O ₂	Electrochemical	0 - 25%	0.1%	±0.1% vol
CO	Electrochemical	0 - 8000 ppm	1 ppm	<300 ppm=±10 ppm up to 2000 ppm=±4% >2000 ppm=±10%
CO Auto Range	Electrochemical	0 - 20,000 ppm	1 ppm	±10% rdg.
CO	NDIR	0 - 15.00%	0.01%	±3% rdg.
NO	Electrochemical	0 - 4000 ppm	1 ppm	<125 ppm=±5 ppm up to 4000 ppm=±4%
NO ₂	Electrochemical	0 - 1000 ppm	1 ppm	<125 ppm=±5 ppm up to 1000 ppm=±4%
Low NO and/or Low NO ₂	Electrochemical	0 - 500 ppm	0.1 ppm	<50 ppm=±2 ppm up to 500 ppm=±4%
NO _x	Calculated	0 - 5000 ppm	1 ppm	
SO ₂	Electrochemical	0 - 4000 ppm	1 ppm	<125 ppm=±5 ppm up to 4000 ppm=±4%
CO ₂	Calculated	0 - 99.9%	0.1%	
CO ₂	NDIR	0 - 20.0%	0.1%	±3% rdg.
C _x H _y	NDIR	0 - 3.00%	0.01%	±3% rdg. + 0.01%
Tair	Pt100	-10 - 99.9°C 14.0 - 212.0°F	1°C 1°F	± 2°C ± 3°F
Tgas	Tc K	0 - 999.9°C 32.0 - 1830°F	1°C 1°F	± 3°C ± 5°F
ΔT	Calculated	0 - 999.9°C 32.0 - 1830°F	1°C 1°F	
Pressure/Draft	Bridge	±40.0 inH ₂ O	0.1 inH ₂ O	±1% rdg.
Excess Air	Calculated	1.00 - infinity	0.01	
Gas Velocity	Calculated	3 - 99.9 m/s 10 - 330 ft/s	0.1 m/s 0.1 ft/s	



REAL-TIME EGAS Software Included



Standard E8500-MK Configuration Includes:

- O₂, CO, NO, NO₂, SO₂ (Electrochemical sensors) and CO₂, High CO, & C_xH_y Hydrocarbon (NDIR sensors)
- Thermoelectric chiller with automatic condensate drain pump
- 40"/1m Sampling Probe (2190°F/1200°C max) with 10'/3m hose & Sintered Filter for probe tip
- Rechargeable battery pack & 110-240VAC/50-60Hz battery charger
- Spare Parts: (10) Line Filters & (5) Condensation Filters
- Stack gas & air temperature measurements
- Draft & differential pressure measurements
- Internal memory (1000 tests)
- Real-time software package with Bluetooth
- Protective carrying case
- Calibration certificate
- Operating manual



Sintered Filter For Probe Included



Available Options:

- Wireless Bluetooth Printer
- Pitot Tube For Stack Gas Velocity
- Low NO_x Sensors
- H₂S Sensor