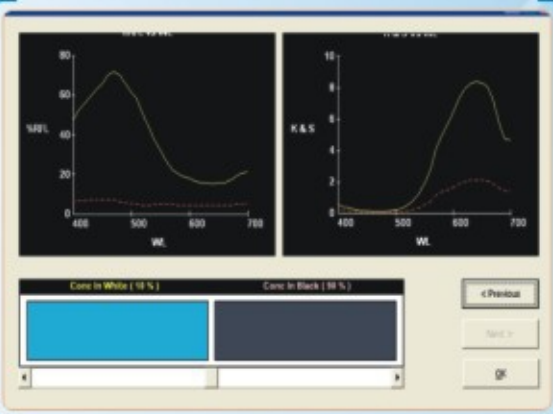
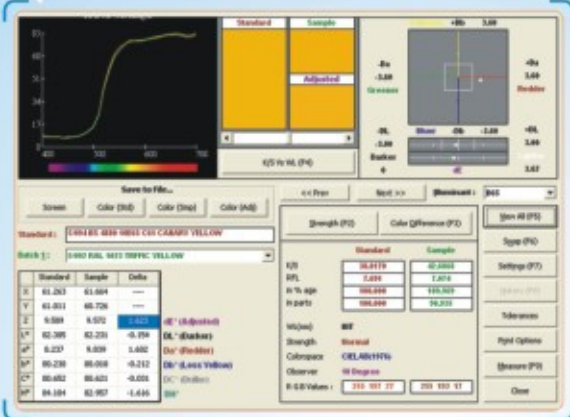
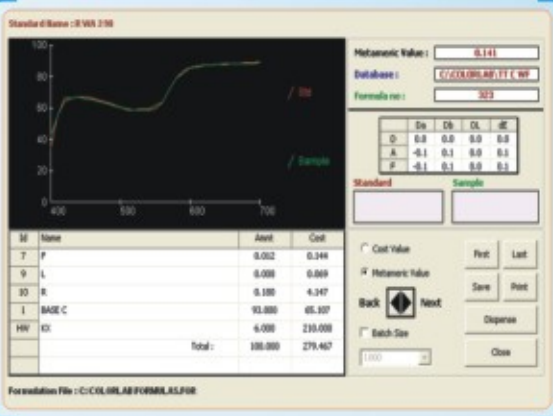


Colorlab+

Color Matching Software



ID	Formula Name	Metameric Index (1 of 99)	Day Asset	Field Asset	Cost
3	HB-ORANGE YELLOW		5.529	5.529	0.000
4	GREEN 7		6.086	6.086	0.000
9	ORANGE		76.519	76.519	0.000
1	TRISTIM WHITE		15.946	15.946	0.000
Metameric Value: 0.640			100.000	100.000	0.000



ID	Name	Asset	Cost
1	STANDARD SHAKE GREY	28.902	24.894
2	BATCH SHAKE GREY	28.907	24.942

ID	Name of Colors	Index Addition	Index Action	Start Formula	Next Formula	Cost
8	YELLOW ORANGE	0.000	0.000	4.910	4.910	0.000
14	SIGNAL RED	0.700	0.700	6.070	6.070	0.000
25	BLUE 7000	0.000	0.000	10.450	10.450	0.000
1	TRISTIM WHITE	0.000	0.000	15.420	15.420	0.000
1	TOTAL	0.700	0.700	100.000	100.700	0.000



SPECTRUM OF SOFTWARE

OUTPUTS

- ▶ Color Difference
- ▶ Colorant Strength
- ▶ Whiteness
- ▶ Yellowness
- ▶ Brightness
- ▶ Spectral Data
- ▶ Gray Scale AATCC
- ▶ Gray Scale ISO 105
- ▶ Staining Scale AATCC
- ▶ Staining Scale ISO 105
- ▶ Contrast Ratio / Opacity
- ▶ Pass / Fail
- ▶ 555 Shade Sort
- ▶ Color-On-Screen
- ▶ Metamerism Index
- ▶ OBA Fluorescence

OBSERVERS

- ▶ 2 Deg
- ▶ 10 Deg

STRENGTH ANALYSIS

- ▶ At wavelength of maximum absorbance
- ▶ At user selected wavelength
- ▶ Integrated strength
- ▶ Saunderson corrected strength
- ▶ Adjusted color difference with space diagram

COLOR SPACES

- ▶ C.I.E.L.* a* b*
- ▶ FMC II
- ▶ HUNTER L a b
- ▶ C M C 2:1/1:1
- ▶ ANLAB 50
- ▶ CIE 94
- ▶ BFD
- ▶ CIE 2000

ILLUMINANTS

- ▶ D 50
- ▶ D 65 CIE daylight
- ▶ D 75
- ▶ A Incandescent
- ▶ C CIE Average daylight
- ▶ F3 CIE fluorescent light
- ▶ CWF Cool white fluorescent
- ▶ TL 84 Showroom Illumination
- ▶ UL 30 Ultralume
- ▶ Horizon

INDICES

- ▶ Whiteness
- ▶ Yellowness
- ▶ Stephensen
- ▶ ASTM D1925
- ▶ Harrison
- ▶ ASTM E 313
- ▶ Berger
- ▶ Brightness
- ▶ Stensby
- ▶ TAPPI / ISO
- ▶ CIE
- ▶ Food
- ▶ Hunter
- ▶ Tomato Color Index
- ▶ ASTM E 313
- ▶ Citrus Redness Index
- ▶ Paper
- ▶ Citrus Yellowness Index
- ▶ Ganz
- ▶ Orange Juice Index

FORMULATION

- ▶ Least Cost Recipes
- ▶ Least Metameric Recipes
- ▶ Formula-on-screen
- ▶ Opacity Loading Prediction

CORRECTION

- ▶ Reformulation
- ▶ Batch Correction
- ▶ Automatic/Manual add Waste Correction

SPECIALISED SOFTWARES

- CURVE GENERATION**
- DYESTUFF / PIGMENT BLENDING**
- SHADE LIBRARY WITH BATCH CORRECTION HISTORY**
- MASTER SATELLITE SOFTWARE**
- INK MATCHING**
- GROUPING**
- KINETICS**

APPLICATIONS

Apparel
Appliances
Automotive
Business Machines
Carpet
Cement
Ceramic
Chemicals

Cosmetics
Dyestuff
Fiber
Floor and Wall Tiles
Food
Food Color
Glass
Graphic Art

Ink
Leather
Mineral
Optical Brightener
Packaging
Paint
Paper

Pharmaceutical
Pigment
Plastics
Rubber
Textiles
Threads
Yarn

Any Color related Application



Premier Colorscan

Premier Colorscan Instruments Pvt. Ltd.

EL-130, Electronic Zone, M.I.D.C., Mahape, Navi Mumbai - 400 710, India.

Telephone: +91 22 2763 7900 / 2768 7900 Fax: +91 22 2762 2022 / 2762 2124 / 2763 7921