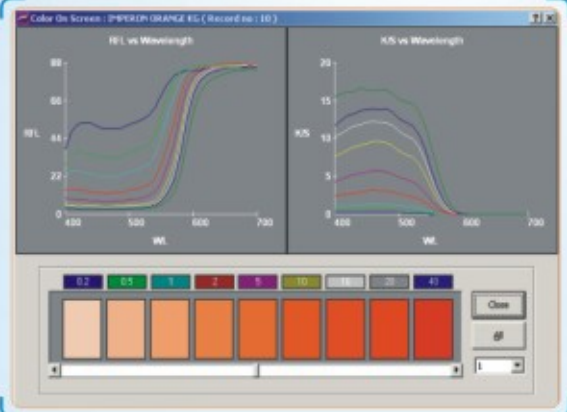
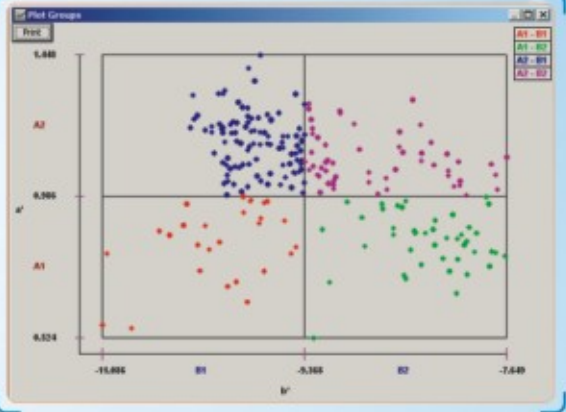
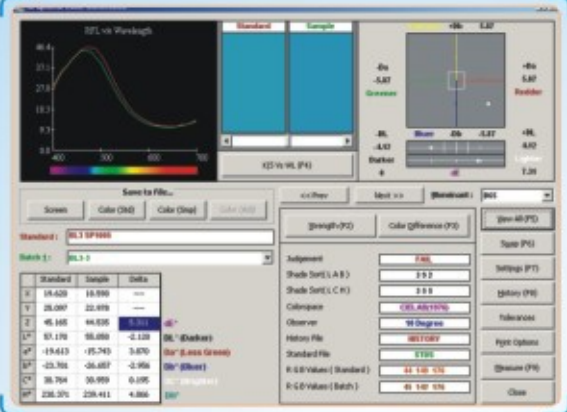
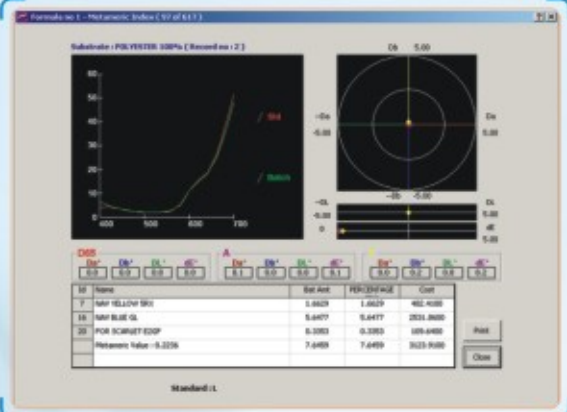


# Colorlab+

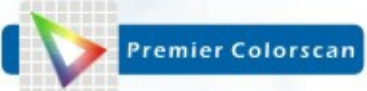
Color Matching Software



Name	X	Y	Z
r	17.01	18.57	18.07
a	17.00	18.84	18.02



Name	Std. Dev.	PERFORMANCE	Cost
7 MAF YELLOW 90	5.4477	1.2039	48.1000
19 MAF BLUE G	5.4477	5.4477	201.2000
20 FOR SCARLET 82P	5.3303	0.3303	109.4000
Parameter Value = 0.2256	7.4489	7.4489	303.9000



FROM LEADER IN THE FIELD OF COMPUTERIZED MATCHING

## SPECTRUM OF SOFTWARE

### OUTPUTS

- ▶ Color Difference
- ▶ Colorant Strength
- ▶ Whiteness
- ▶ Yellowness
- ▶ Brightness
- ▶ Spectral Data
- ▶ Gray Scale AATCC
- ▶ Gray Scale ISO 105
- ▶ Staining Scale AATCC
- ▶ Staining Scale ISO 105
- ▶ Contrast Ratio / Opacity
- ▶ Pass / Fail
- ▶ 555 Shade Sort
- ▶ Color-On-Screen
- ▶ Metamerism Index
- ▶ OBA Fluorescence

### OBSERVERS

- ▶ 2 Deg
- ▶ 10 Deg

### STRENGTH ANALYSIS

- ▶ At wavelength of maximum absorbance
- ▶ At user selected wavelength
- ▶ Integrated strength
- ▶ Saunderson corrected strength
- ▶ Adjusted color difference with space diagram

### COLOR SPACES

- ▶ C.I.E.L.\* a\* b\*
- ▶ FMC II
- ▶ HUNTER L a b
- ▶ C M C 2:1/1:1
- ▶ ANLAB 50
- ▶ CIE 94
- ▶ BFD
- ▶ CIE 2000

### ILLUMINANTS

- ▶ D 50
- ▶ D 65 CIE daylight
- ▶ D 75
- ▶ A Incandescent
- ▶ C CIE Average daylight
- ▶ F3 CIE fluorescent light
- ▶ CWF Cool white fluorescent
- ▶ TL 84 Showroom Illumination
- ▶ UL 30 Ultralume
- ▶ Horizon

### INDICES

- ▶ Whiteness
- ▶ Yellowness
- ▶ Stephensen
- ▶ Harrison
- ▶ Berger
- ▶ Stensby
- ▶ CIE
- ▶ Hunter
- ▶ ASTM E 313
- ▶ Paper
- ▶ Ganz
- ▶ ASTM D1925
- ▶ ASTM E 313
- ▶ Brightness
- ▶ TAPPI / ISO
- ▶ Food
- ▶ Tomato Color Index
- ▶ Citrus Redness Index
- ▶ Citrus Yellowness Index
- ▶ Orange Juice Index

### FORMULATION

- ▶ Least Cost Recipes
- ▶ Least Metameric Recipes
- ▶ Formula-on-screen
- ▶ Opacity Loading Prediction

### CORRECTION

- ▶ Reformulation
- ▶ Batch Correction
- ▶ Automatic/Manual add Waste Correction

### SPECIALISED SOFTWARES

#### CURVE GENERATION

#### DYESTUFF / PIGMENT BLENDING

#### SHADE LIBRARY WITH BATCH CORRECTION HISTORY

#### MASTER SATELLITE SOFTWARE

#### INK MATCHING

#### GROUPING

#### KINETICS

### APPLICATIONS

Apparel

Appliances

Automotive

Business Machines

Carpet

Cement

Ceramic

Chemicals

Cosmetics

Dyestuff

Fiber

Floor and Wall Tiles

Food

Food Color

Glass

Graphic Art

Ink

Leather

Mineral

Optical Brightener

Packaging

Paint

Paper

Any Color related Application

Pharmaceutical

Pigment

Plastics

Rubber

Textiles

Threads

Yarn



Premier Colorscan

### Premier Colorscan Instruments Pvt. Ltd.

EL-130, Electronic Zone, M.I.D.C., Mahape, Navi Mumbai - 400 710, India.

Telephone: +91 22 2763 7900 / 2768 7900 Fax: +91 22 2762 2022 / 2762 2124 / 2763 7921