

- Instrument used** : Balance with density kit (Mettler Toledo AG204)  
**Test method** : Specific Gravity  
**Specimen preparation** : Specimens (~10x10x4 mm<sup>3</sup>) were cut out from the sample. It was weighed in air and recorded. It was then submerged in water and the weight was recorded again. The specific gravity was calculated from the equation as following :

$$\text{Specific Gravity} = \left( \frac{\text{weight in air}}{\text{weight in air} - \text{weight in water}} \right)$$

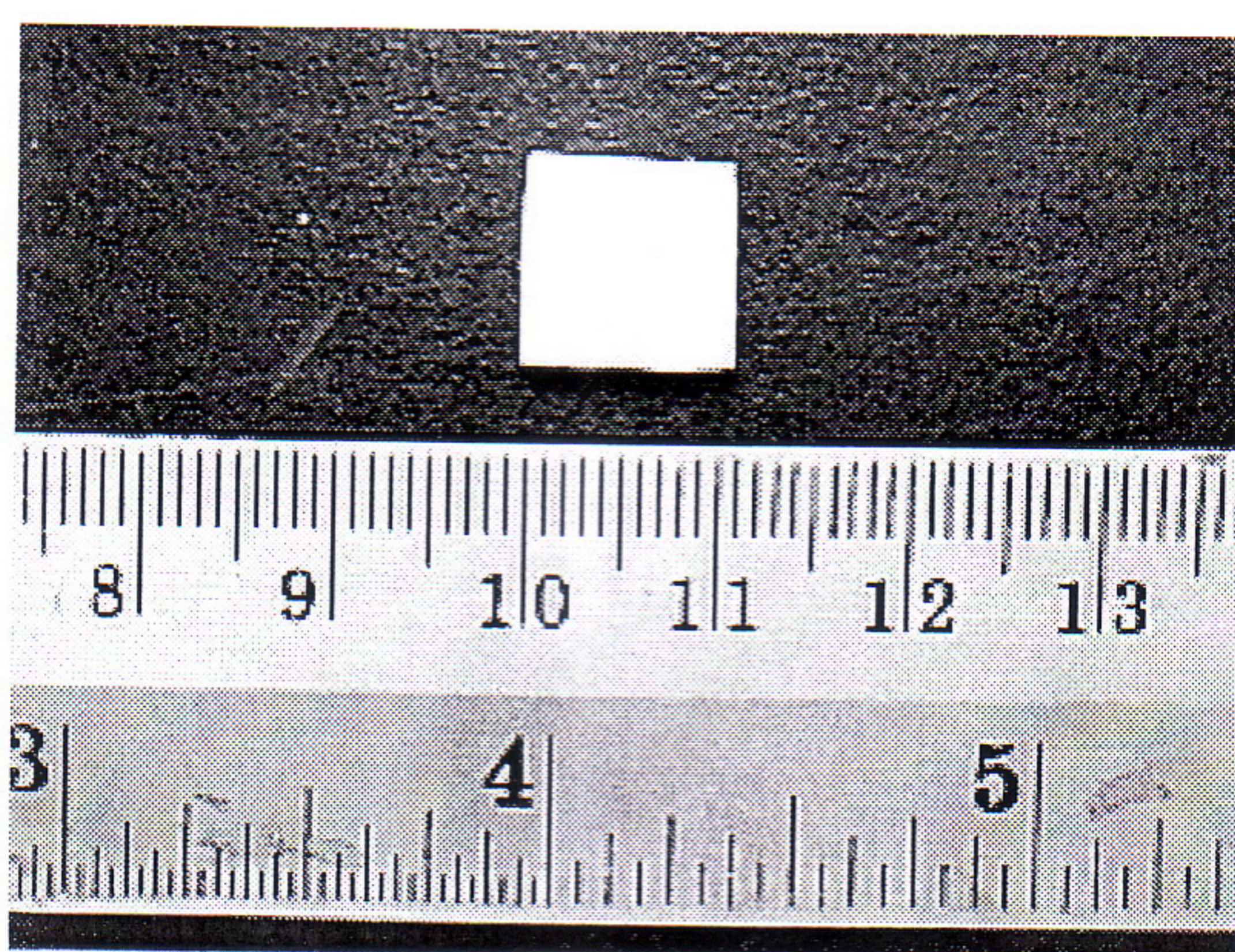


Figure 2 : Specimen.

Results :

Sample	Specimen Number	Specific Gravity
Blue-Silver Cartridge	1	1.70
	2	1.70
	3	1.70
	4	1.70
	5	1.70
<b>Average</b>		1.70
<b>SD.</b>		0.00

Sample	Specimen Number	Specific Gravity
Gray-Silver Cartridge	1	1.74
	2	1.74
	3	1.74
	4	1.74
	5	1.73
<b>Average</b>		1.74
<b>SD.</b>		0.00