

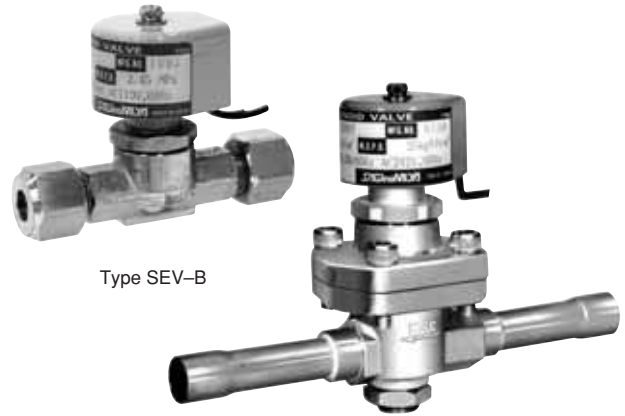
SOLENOID VALVES FOR REFRIGERANT

Type **SEV**

SAGINOMIYA

GENERAL DESCRIPTION

- Pilot operated, 2-way, normally closed valve.
- For non-corrosive refrigerant (liquid or gas) in refrigeration units. Also available for air application.
- Can operate under no pressure difference. (SEV-502 and 603)
- Can install horizontally and vertically. (Coil should be located above the axis of pipe line.)



Type SEV-B

Type SEV-D

TYPE NUMBER SELECTION (SPECIFICATIONS)

Unit: MPa {kgf/cm²}

Catalog No.	Port Size (mm)	Cv Value	* Nominal Capacity (Refrigerants in Liquid) (U.S.R.T.)		Connection		O.P.D.		Max. Working Press.	Body Test Press.	Fluid Temp. (°C)	Ambient Temp. (°C)	Wt. (kg)
			R134a	R22	Copper pipe (O.D.)	Style	Min.	Max.					
SEV-502BX[Y]F	5	0.51	2.1	2.3	1/4"	Flare	0	2.45 {25}	2.94 {30}	4.41 {45}	-40 to 125	-30 to 50	0.4
SEV-603BX[Y]F	6	0.80	3.3	3.6	3/8"								
SEV-1004BX[Y]F	10	1.75	7.3	7.8	1/2"								
SEV-1205BX[Y]F	12	2.9	12.1	13.0	5/8"								
SEV-1506BX[Y]F	15	4.5	18.8	20.1	3/4"								
SEV-502DX[Y]F	5	0.53	2.2	2.4	1/4"	Solder	0	1.96 {20}	2.94 {30}	4.41 {45}	-40 to 125	-30 to 50	0.3
SEV-603DX[Y]F	6	0.83	3.5	3.8	3/8"								
SEV-1004DX[Y]F	10	2.0	8.3	8.9	1/2"								
SEV-1205DX[Y]F	12	3.5	14.6	15.6	5/8"								
SEV-1506DX[Y]F	15	5.3	22.1	23.7	3/4"								

* Nominal capacities are based on $\Delta P=0.014710$ MPa {0.15 kgf/cm²}, condensing temp. =38°C and evaporating temp. =5°C.

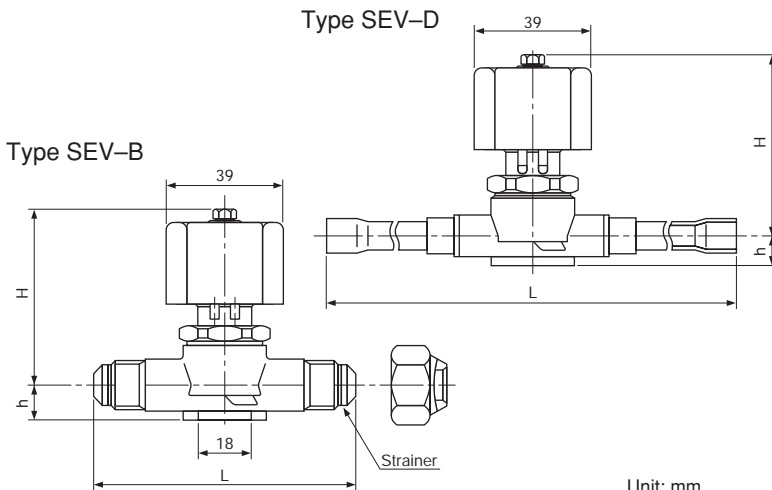
• Weight includes a coil

ELECTRICAL RATING OF SOLENOID COILS

Rated Voltage	Tolerance (%)	Voltampere (VA)		Power Consumption (W)	Insulation Class
		Running	Inrush		
24V.AC, 100V.AC, 110V.AC 200V.AC, 220V.AC, 240V.AC	±10	15/11	45/33	7/6	Class B Molded
12V. DC, 24V. DC, 100V. DC		—	—	10	

Current (A)=Voltampere / Rated Voltage

DIMENSIONS



Unit: mm

Catalog No.	Unit: mm			
	L	H	h	
SEV-	502B	85	58	11.5
	603B			
	1004B	105	85	20.5
	1205B	115	88	22
	1506B	135	95	25
	502D	270	58	10.5
	603D			
	1004D	160	85	20.5
	1205D	180	88	22
	1506D	190	95	25

SOLENOID VALVES FOR REFRIGERANT

Type REV & UEV

SAGINOMIYA

GENERAL DESCRIPTION

- Pilot operated, 2-way, normally closed valve (Type REV) and normally opened valve (Type UEV).
- For non-corrosive refrigerant (liquid or gas) in refrigeration, cooling, air conditioning systems.
- "Double plunger" construction provides reliable On/Off action.
- Compact molded coil commonly fits all valve sizes.
- Operates in any position ... can be conveniently located in horizontal or vertical line with coil on top.
- Manual Opening Stem ... On Flange connection models, supplied as standard. On Flare or Solder connection models, supplied upon request.



Type REV-D



Type UEV-B

TYPE NUMBER SELECTION (SPECIFICATIONS)

Unit: MPa {kgf/cm²}

Catalog No.	Port Size (mm)	Cv Value	Connection		Style	O.P.D.		Max. Working Pressure	Wt. (kg)										
			Copper Tube O.D.	Steel Tube O.D.		Min.	Max.												
REV-703BX[Y]F	7	1.0	3/8"	—	Flare	0.007 {0.07}	2.45 {25}	2.94 {30} [4.2{42}]	0.6										
REV-1004BX[Y]F	10	2.0	1/2"						Rc	0.9									
REV-1205BX[Y]F	12	3.5	5/8"							Solder	1.1								
REV-1506BX[Y]F	15	5.3	3/4"								1.5								
REV-1003GX[Y]F	10	2.0	3/8"								1.0								
REV-1204GX[Y]F	12	3.5	1/2"		1.3														
REV-1506GX[Y]F	15	5.3	3/4"		1.7														
REV-703DX[Y]F	7	1.0	3/8"		*				0.007 {0.07}	2.45 {25}	2.94 {30} [4.2{42}]	0.5							
REV-1004DX[Y]F	10	2.0	1/2"									Flange	0.8						
REV-1205DX[Y]F	12	3.5	5/8"										Solder	0.9					
REV-1506DX[Y]F	15	5.3	3/4"											1.1					
REV-2007DX[Y]F	20	9.0	7/8"											Flare	0.007 {0.07}	2.45 {25}	2.94 {30} [4.2{42}]	1.6	
REV-2010DX[Y]F			1"																Rc
REV-2011DX[Y]F			1-1/8"																
REV-2511DXF	25	13.8	1-1/8"									Solder	0.007 {0.07}	2.45 {25}	2.94 {30} [4.2{42}]	2.2			
REV-2512DXF			1-1/4"																
REV-2513DXF			1-3/8"																
REV-3213DXF			1-3/8"																
REV-3214DXF			1-1/2"																
REV-3215DXF	32	19.4	1-5/8"									3.2							
REV-2006EXF	20	9.0	7/8"	1-1/4"		3/4"	*	0.007 {0.07}				1.96 {20}	2.94{30}	5.1					
REV-2510EXF	25	13.8	1"	1-1/2"		1"								7.7					
REV-3212EXF	32	19.4	1-1/4"	1-5/8"	1-1/4"	8.9													
REV-4014EXF	40	32.0	1-1/2"	2"	1-1/2"	10.8													
REV-5020EXF	50	45.0	2"	2-1/2"	2"	16.3													
REV-6524EXF	65	74.0	2-1/2"	3"	2-1/2"	23.2													
REV-6530EXF			3"	3-1/2"	3"	26.6													
UEV-1004BXF			10	2.0	1/2"	—			Flare	0.007 {0.07}	1.96 {20}			2.94{30}	0.9				
UEV-1205BXF	12	3.5	5/8"	Rc	1.1														
UEV-1506BXF	15	5.3	3/4"		Solder										1.5				
UEV-1003GXF	10	2.0	3/8"				1.0												
UEV-1204GXF	12	3.5	1/2"				1.3												
UEV-1506GXF	15	5.3	3/4"				1.7												
UEV-2010GXF	20	9.0	1"	*			0.007 {0.07}	1.96 {20}	2.94{30}			1.9							
UEV-1004DXF	10	2.0	1/2"		Flange							0.8							
UEV-1205DXF	12	3.5	5/8"									Solder	0.9						
UEV-1506DXF	15	5.3	3/4"										1.1						
UEV-2007DXF	20	9.0	7/8"										Flare		0.007 {0.07}	1.96 {20}	2.94{30}	1.6	
UEV-2010DXF			1"																Rc
UEV-2011DXF			1-1/8"																

* With companion flange, specify copper tube O.D. size when order.

• O.P.D.: Operating Pressure Differential (by air pressure)

• Ambient temperature: -30 to 40°C, allowable fluid temperature: -40 to 125°C (REV), -40 to 120°C (UEV)

• Weight includes a coil

ELECTRICAL RATING OF SOLENOID COILS

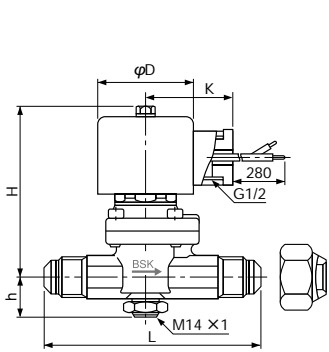
Type	Rated Voltage	Tolerance (%)	Voltampere (VA)		Power Consumption (W)	Insulation Class
			Running	Inrush		
REV	24V.AC, 100V.AC, 110V.AC 200V.AC, 220V.AC, 240V.AC	50/60Hz	+10 -15	17/14	43/35	Class B Molded
	12V.DC, 24V.DC 48V.DC, 100V.DC	—	±10	—	—	
UEV	24V.AC, 100V.AC, 110V.AC 200V.AC, 220V.AC, 240V.AC	50/60Hz	±10	17/14	43/35	8/7

Specify voltage & frequency when order.

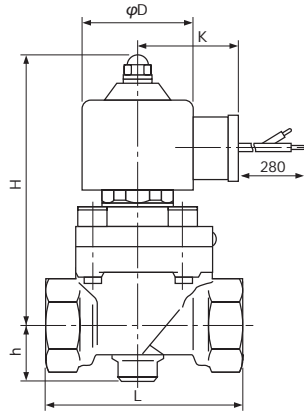
Current (A)=Voltampere / Rated Voltage

DIMENSIONS

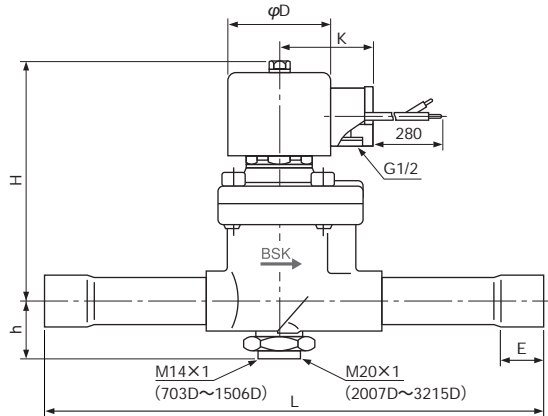
Type REV-B, UEV-BX



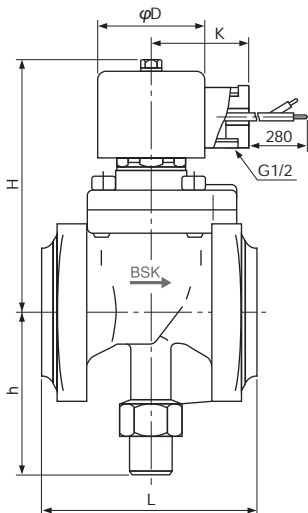
Type REV-G, UEV-GX



Type REV-D, UEV-DX



Type REV-EX



Catalog No.	Unit: mm						
	L	H	h	E	φD	K	
703BX[Y]	90	70[73]	19	—	48	44	
1004BX[Y]	105	88[90]	21				
1205BX[Y]	115	90[92]	22				
1506BX[Y]	135	96[99]	25				
1003GX[Y]	65	89[91]	20				
1204GX[Y]	75	94[96]	21				
1506GX[Y]	85	99[102]	24				
703DX[Y]	150	70[73]	19				10
1004DX[Y]	160	88[90]	21				13
1205DX[Y]	180	90[92]	22				16
1506DX[Y]	190	96[99]	25	19			
2007DX[Y]	230	112 [116]	29	20	48	44	
2010DX[Y]							
2011DX[Y]							
2511DX	240	123	31	23			
2512DX							
2513DX							
3213DX							
3214DX	260	126	35	26			
3215DX							
2006EX							95
2510EX	110	123	78				
3212EX	120	126	87				
4014EX	130	133	92				
5020EX	170	149	115				
6524EX	200	169	129				
6530EX	210						
1004BX	105	108	21	48	44		
1205BX	115	110	22				
1506BX	135	116	25				
1003GX	65	109	20				
1204GX	75	112	21				
1506GX	85	119	24				
2010GX	100	133	33				
1004DX	160	108	21			13	
1205DX	180	110	22			16	
1506DX	190	116	25			19	
2007DX	230	132	29	20			
2010DX							
2011DX							

Unit: mm