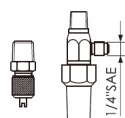


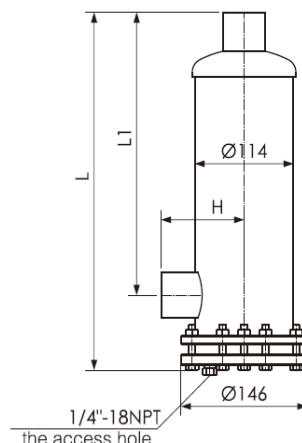
FE Series Replaceable Core Filter



- + Application for R22 ,R404A,R134a ,R407F
- + Design pressure : 2.9Mpa. (420 PSIG , 29 bar)



Non standard parts



Model	Core	ODS.	L(mm.)	L1(mm.)	Volume(L)	THB.	Stock
FE -485	1	5/8"	221	153	1.6	1,950	
FE-487	1	7/8"	231	159	1.6	2,000	
FE-489	1	1-1/8"	230	156	1.6	2,100	
FE-4811	1	1-3/8"	240	162	1.6	2,200	
FE-4813	1	1-5/8"	239	157	1.6	2,300	
FE-4817	1	2-1/8"	249	161	1.6	2,500	
FE-4821	1	2-5/8"	246	151	1.6	2,600	
FE-4825	1	3-1/8"	246	145	1.6	2,800	

FRE Series Core for Suction Filter



- + Temperature range -50°C to +100°C

FRE-48



FRE-48W



FJ-48

Model	Core	Material	THB.
FRE-48	Suction	Fibrous balayouse filter core	500
FRE-48W	Suction	Stainless steel filter core	1,200
FRE-100	Suction	Fibrous balayouse filter core	1,300
FJ-48H	Liquid	100% Molecular sieve	500
FJ-48A	Liquid	80% Molecular sieve/20% Active	500

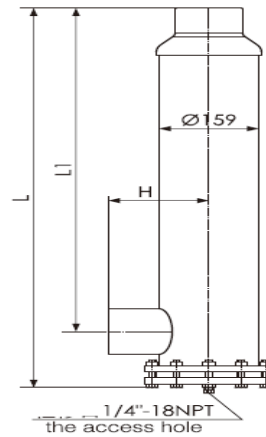
Stock

FEM Series Replaceable Core Filter



- + แนะนำใช้กับ ด้าน Suction ของ Screw compressors.
- + Design pressure : 2.9Mpa. (420 PSIG , 29 bar)
- + ใช้กับ FRE-100 , FRE-100W

Model	SAE.	THB.
FEM 10025	3-1/8"	7,000

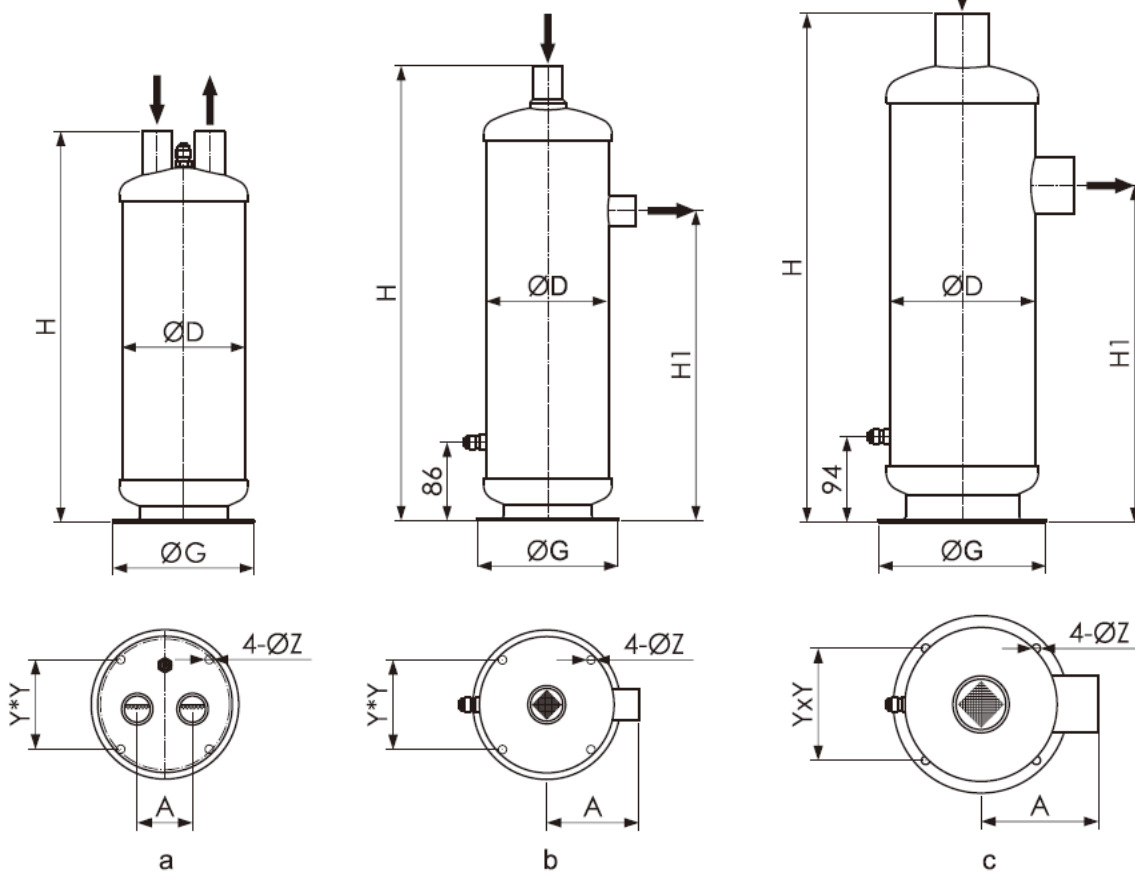


Stock



F-56 Series Oil Separator

- + Application for R22 ,R404A,R134a ,R407F
- + Design pressure : 2.9Mpa. (420 PSIG , 29 bar)



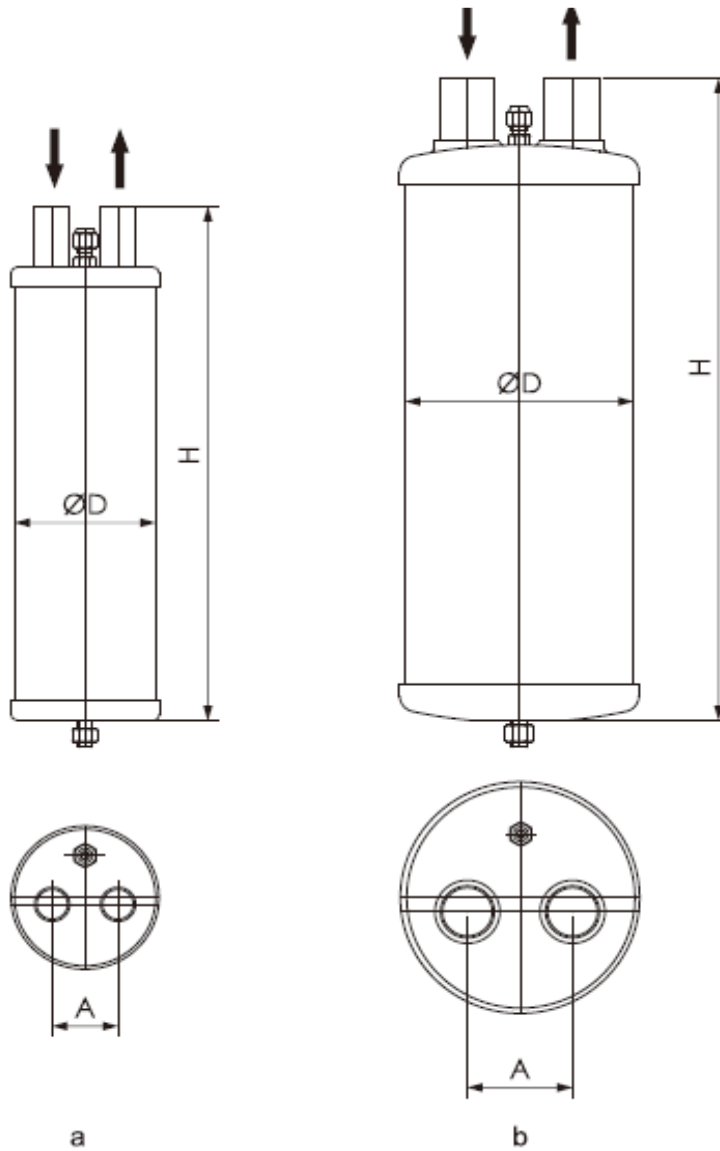
Model	OD	H (mm.)	Oil (SAE)	Charge(L)	Fig	THB.	Stock
F-5600	3/8"	273	1/4"	0.5	a	1,500	
F-5601	1/2"	273	1/4"	0.5	a	1,600	
F-5602	5/8"	343	1/4"	0.5	a	1,700	
F-5603	7/8"	424	3/8"	0.9	b	2,100	
F-5604	1-1/8"	499	3/8"	0.9	b	2,300	
F-5605	1-3/8"	499	3/8"	0.9	b	3,000	
F-5606	1-5/8"	558	3/8"	1.2	c	3,500	
F-5607	2-1/8"	558	3/8"	1.2	c	3,700	

* When you use the oil separator for the first time, please fill the oil into the oil separature.

F-52 & F-62 Series Oil Separator



- + Application for R22 ,R404A,R134a ,R407F
- + Design pressure : 2.9Mpa. (420 PSIG , 29 bar)



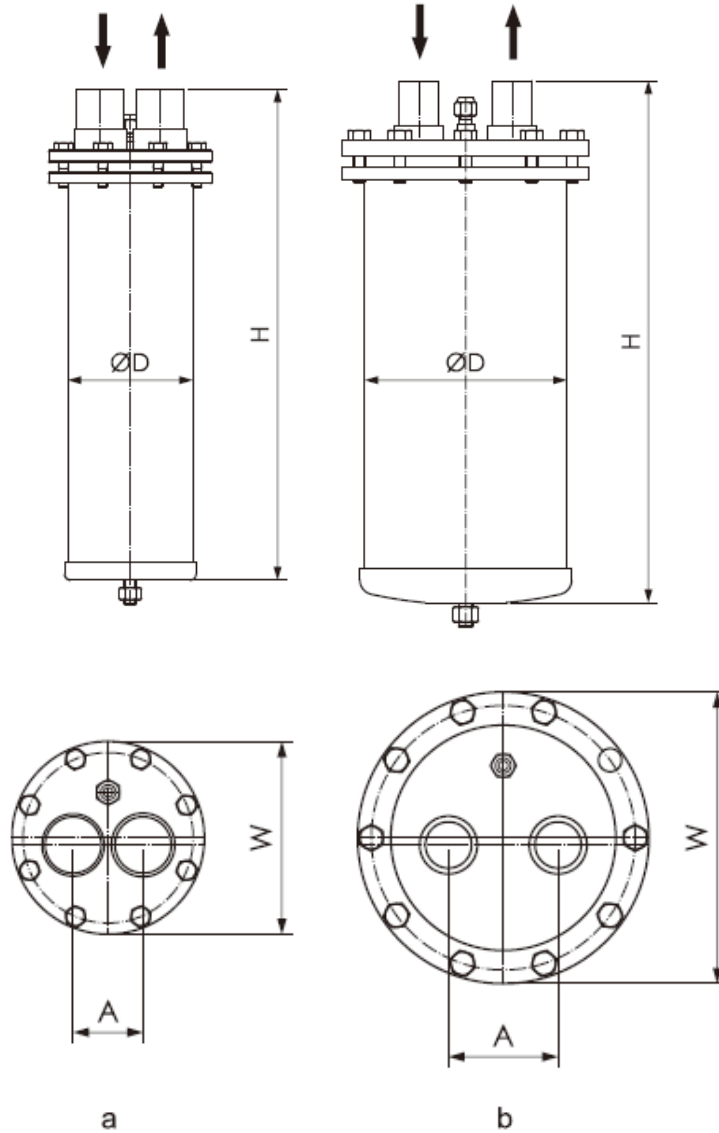
Model	OD	H (mm.)	Oil (SAE)	Charge(L)	Fig	THB.	Stock
F-5200	3/8"	260	1/4"	0.5	a	1,700	
F-5201	1/2"	260	1/4"	0.5	a	1,700	
F-5202	5/8"	327	1/4"	0.5	a	1,800	
F-5203	7/8"	384	1/4"	0.5	a	2,000	
F-5204	1-1/8"	407	1/4"	0.5	a	2,300	
F-5205	1-3/8"	492	1/4"	0.5	a	2,600	
F-6206	1-5/8"	480	1/4"	1.2	b	3,700	

* When you use the oil separator for the first time, please fill the oil into the oil separature.

F-52S & F-62S Series Oil Separator



- + Application for R22 ,R404A,R134a ,R407F
- + Design pressure : 2.9Mpa. (420 PSIG , 29 bar)



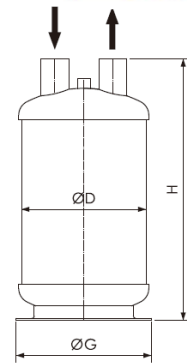
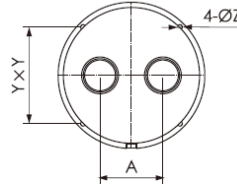
Model	OD	H (mm.)	Oil (SAE)	Charge(L)	Fig	THB.	Stock
F-5200S	3/8"	273	1/4"	0.5	a	1,500	
F-5201S	1/2"	273	1/4"	0.5	a	1,600	
F-5202S	5/8"	343	1/4"	0.5	a	1,700	
F-5203S	7/8"	424	1/4"	0.5	a	2,100	
F-5204S	1-1/8"	499	1/4"	0.5	a	2,300	
F-5205S	1-3/8"	499	1/4"	0.5	a	3,000	
F-6206S	1-5/8"	558	1/4"	1.2	b	3,500	

* When you use the oil separator for the first time, please fill the oil into the oil separature.

FA2 Series Accumulator



- + Application for R22 ,R404A,R134a ,R407F
- + Design pressure : 1.7Mpa. (245 PSIG , 17 bar)

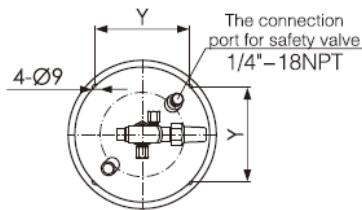
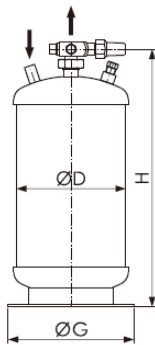


Model	OD	D (mm.)	G(mm.)	Y (mm.)	Volume(L)	THB.	Stock
FA2-204	1/2"	102	140	86	1.6	900	
FA2-205	5/8"	102	140	86	2	1,000	
FA2-207	7/8"	140	160	96	5	1,400	
FA2-208	1-1/8"	165	190	120	8	1,900	
FA2-209	1-3/8"	165	190	120	10	2,500	
FA2-210	1-5/8"	219	250	155	16	3,400	
FA2-221	2-1/8"	273	296	193	24	9,500	
FA2-225	2-5/8"	273	296	193	31.5	12,000	
FA2-231	3-1/8"	325	353	230	43	22,000	

L Series Vertical Liquid Receiver



- + Application for R22 ,R404A,R134a ,R407F
- + Design pressure : 2.9Mpa. (420 PSIG , 29 bar)

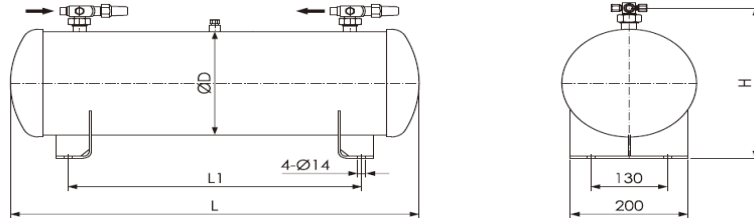


Model	OD	OD. (mm.)	H(mm.)	Safety	Volume(L)	THB.	Stock
L-4	3/8"x3/8"	165	290	1/4" NPT	4	1,600	
L-6	1/2"x1/2"	165	390	1/4" NPT	6	1,800	
L-8	1/2"x1/2"	165	490	1/4" NPT	8	2,000	
L-10	5/8"x5/8"	219	369	1/4" NPT	10	2,300	
L-12	5/8"x5/8"	219	429	1/4" NPT	12	2,500	
L-14	5/8"x5/8"	219	484	1/4" NPT	14	2,600	
L-19	7/8"x7/8"	219	641	1/4" NPT	19	4,100	
L-23	7/8"x7/8"	219	756	1/4" NPT	23	4,300	

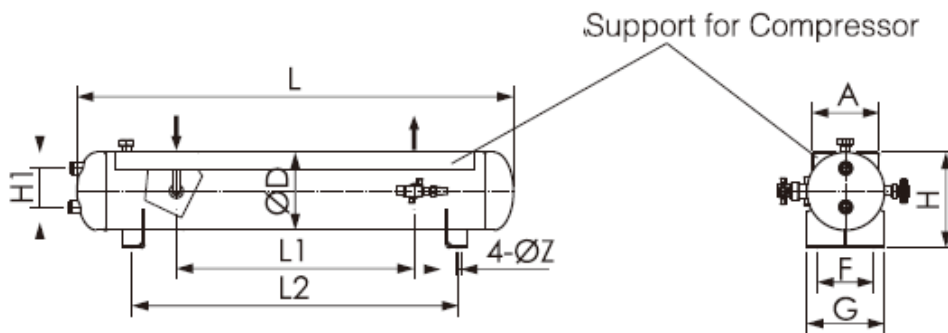
W Series Horizontal Liquid Receiver



- + Application for R22 ,R404A,R134a ,R407F
- + Design pressure : 1.7Mpa. (245 PSIG , 17 bar)



Model	OD	L (mm.)	L1(mm.)	H (mm.)	Volume(L)	THB.	Stock
W-14	1/2"	743	460	203	14	3,500	
W-16	5/8"	843	640	203	16	3,900	
W-19	5/8"	993	700	203	19	4,000	
W-23	7/8"	1203	940	203	23	4,900	
W-29	7/8"	865	625	269	29	6,800	



Model	OD	L (mm.)	L1(mm.)	H (mm.)	Volume(L)	THB.	Stock
E2W-40L	1-1/8"x7/8"	1230	670	229	40	18,980	

FOK Series Oil filter

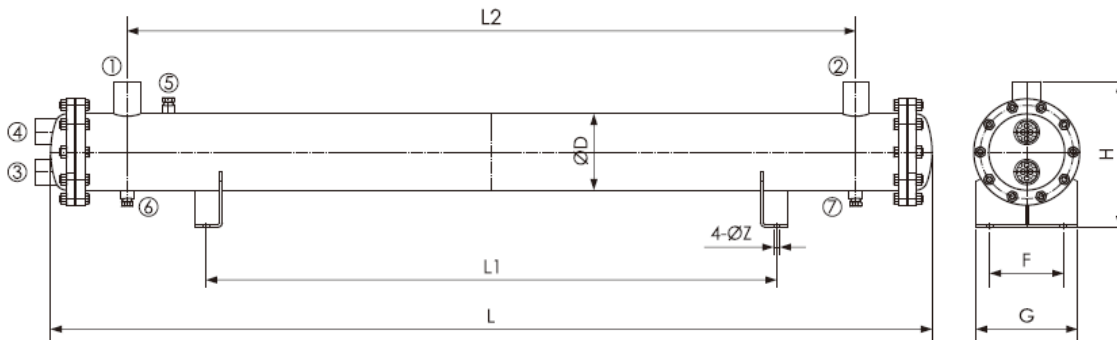
- + Design pressure : 2.9Mpa. (420 PSIG , 29 bar)
- + Filtering accuracy 50 micron.



Model	SAE.		THB.
FOK-03	3/8"	For oil return in the rack system.	1,500

Stock

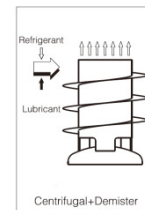
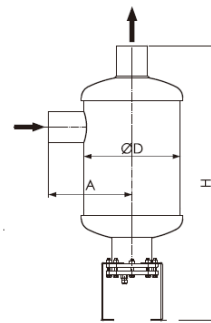
FOI Series Water to Oil Cooler



Water oil cooler Model	FOI-29	FOI-57	FOI -86	FOI - 120	FOI -180	Stock
Water inlet temperature 35 °C	4.6-8.2	10.3-17.6	18.6-27.2	29.8-45.5	42.5-70	
Water flow m ³ /h	2-4.5	3-6	3-6.5	3-7.5	3.4-10	
Pressure drop .bar	0.22	0.23	0.24	0.25	0.35	
Dimension L mm.	924	1048	1348	1748	1915	
Oil connection	1-3/8"	1-3/8"	1-5/8"	1-5/8"	2-1/8"	
Water connection :inch.	1"	1"	1-1/4"	1-1/4"	1-1/2"	
ราคาตั้ง	16,000	25,000	29,000	35,000	45,000	
		OW501	OW781	OW941	HS- 85	

F-66SG Series Oil Separator

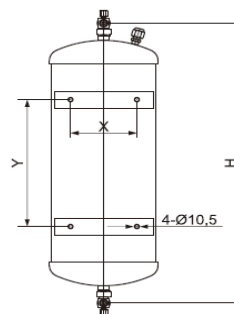
- + Application for R22 ,R404A,R134a ,R407F
- + Design pressure : 2.9Mpa. (420 PSIG , 29 bar)



Model	OD	H (mm.)	Oil (SAE)	Charge(L)	Volume (L)	THB.	Stock
F 6625SG	3-1/8"	273	3/8"	0.5	23	30,000	

FOR Series Vertical Oil Reservoir

Model	Connection	H (mm.)	Volume	THB.
FOR -8	3/8"	516	8L.	5,200
FOR -19	1/2"	516	8L.	5,200

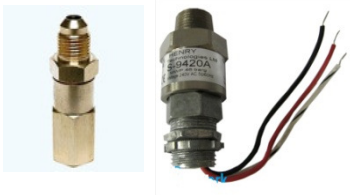


Stock

Oil level regulator , Oil differential pressure valves :



Model	ชื่อสินค้า	THB.	NET.Pro
S9530Z	Oil Level Regulators (Mechanical)	3,470	2,400
OP-02	Electronics Oil level regulator 24VAC	17,500	6,500
S-9104H	HENRY: Reservoir pressure valve 20 psig.	1,600	1,100
S9420	Liquid level switch	4,750	-



Model	ชื่อสินค้า	THB.	Stock
P36818	H-48 : Liquid and suction filter	400	
A18733C	Suction filter	500	
P37267	Burnout bock	1,800	

F-66SG Series Oil Separator



- + Application for R22 ,R404A,R134a ,R407F
- + Design pressure : 2.9Mpa. (420 PSIG , 29 bar)

Model	OD	H (mm.)	Oil (SAE)	Charge(L)	Volume (L)	THB.	Stock
F 6625SG	3-1/8"	273	3/8"	0.5	23	30,000	